

87
UNITED STATES LINES
AMERICAN MERCHANT LINES

ROOSEVELT STEAMSHIP COMPANY, INC.

GENERAL AGENTS

PIERS 58, 59, 60, 61, 62
NORTH RIVER

NEW YORK

December 7, 1933.

Department of Health,
Bureau of Vital Statistics,
New York, N. Y.

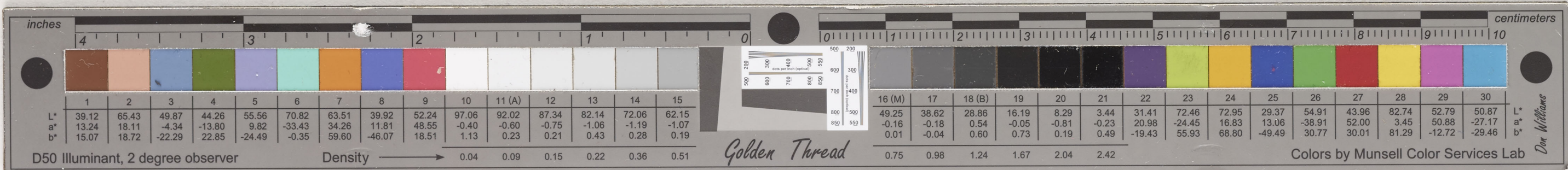
Gentlemen:

I regret to advise that John Lynch, Fireman,
S.S. AMERICAN MERCHANT, died at sea at 4:45 A.M. on
the 5th instant from infection of the parotid gland
and Edematous Laryngitis.

Infection resulted from tooth extracted by a
private Dentist in London on November 22nd, 1933.

Yours very truly,

H. Payton Cronk M.D.
Surgeon
S.S. AMERICAN MERCHANT.



ORDER NO. 56071
DATE 5-20-44
NUMBER ISSUED 1
SEARCHER
PHOTO. 17

89

The image shows a Golden Thread color calibration target. At the top, there is a ruler with inches on the left (0 to 4) and centimeters on the right (0 to 10). Below the ruler is a series of 15 color patches, each with its L*, a*, and b* values. To the right of these patches is a grayscale step wedge with density values from 0.04 to 0.91. Further right is another series of 15 color patches, each with its L*, a*, and b* values. At the bottom, there is a ruler with inches on the left (0 to 4) and centimeters on the right (0 to 10). The target is labeled "Golden Thread" and "Colors by Munsell Color Services Lab".

Patch	1	2	3	4	5	6	7	8	9	10	11 (A)	12	13	14	15
L*	39.12	65.43	49.87	44.26	55.56	70.82	63.51	39.92	52.24	97.06	92.02	87.34	82.14	72.06	62.15
a*	13.24	18.11	-4.34	-13.80	9.82	-33.43	34.26	11.81	48.55	-0.40	-0.75	-1.06	-1.06	-1.07	-1.07
b*	15.07	18.72	-22.29	22.85	-24.49	-0.35	59.60	-46.07	18.51	1.13	0.23	0.21	0.43	0.18	0.19

Patch	16 (M)	17	18 (B)	19	20	21	22	23	24	25	26	27	28	29	30
L*	49.25	38.62	28.86	16.19	8.29	3.44	31.41	72.46	72.95	29.37	54.91	43.96	82.74	52.79	50.87
a*	-0.16	-0.18	0.54	-0.05	-0.81	-0.23	20.98	-24.45	16.83	13.06	-38.91	52.00	3.45	50.88	-27.17
b*	0.01	-0.04	0.60	0.73	0.19	-0.49	-19.43	55.93	68.80	-49.49	81.29	30.01	-12.72	-29.46	-29.46

D50 Illuminant, 2 degree observer

Density → 0.04 0.09 0.15 0.22 0.36 0.51

Golden Thread

Colors by Munsell Color Services Lab

Don Williams