

**BOX
19
FOLDER
212**

**Titanic Disaster -
Expressions of Sympathy**

1912

POSTAL TELEGRAPH - COMMERCIAL CABLES

CLARENCE H. MACKAY, PRESIDENT

RECEIVED AT

233 BROADWAY, N. Y.
PHONE 8780 BARCLAY

CABLEGRAM

DELIVERY NO.

45

The Postal Telegraph-Cable Company (Incorporated) transmits and delivers this cablegram subject to the terms and conditions printed on the back of this blank.

DESIGN PATENT No. 48829

GLNY.

A154 RA. CF. 52. VIA BAM.

SYDNEY, APRIL 17, 1912.

THE MAYOR,

NEWYORK.

ON BEHALF ALDERMEN AND CITIZENS OF SYDNEY I DESIRE TO CONVEY TO
OUR KINSMEN IN AMERICA OUR PROFOUND SORROW AND SINCERE SYMPATHY
IN THE INTERNATIONAL AND APPALLING LOSS TITANIC ALTHOUGH SEPARATED
BY DISTANCE WE JOIN WITH YOU IN THE SORROW CAUSED BY THIS LAMEN-
TABLE CALAMITY.

ALLEN TAYLOR,

LORD MAYOR.

958 AM.

No inquiry respecting this message can be attended to without the production of this paper. Repetitions of doubtful words should be obtained through the Company's offices, and not by DIRECT application to the sender.

POSTAL TELEGRAPH-CABLE COMPANY IN CONNECTION WITH THE COMMERCIAL CABLE COMPANY



THE GREATEST TELEGRAPH AND CABLE SYSTEM IN THE WORLD. EXTENDS OVER TWO-THIRDS OF THE WAY AROUND THE EARTH.

THE POSTAL TELEGRAPH-CABLE COMPANY (INCORPORATED)

TRANSMITS AND DELIVERS THE WITHIN MESSAGE SUBJECT TO THE FOLLOWING TERMS AND CONDITIONS:

THIS COMPANY may decline to forward any message, though it has been accepted for transmission, but in case of so doing, shall refund to the sender the amount paid for its transmission.

THIS COMPANY WILL NOT ASSUME ANY RESPONSIBILITY IN RESPECT TO ANY MESSAGE BEYOND THE TERMINUS OF ITS OWN LINES.

To guard against mistakes or delays, the sender of a message should WRITE IT LEGIBLY and order it REPEATED; that is, telegraphed back to the sending station for comparison. For such repeating an additional charge of one-quarter the regular rate will be made.

It is agreed between the sender of the message on the face hereof, and this Company, that said Company shall not be liable for mistakes or delays in transmission or delivery, or for non-delivery, or mis-delivery, of any unrepeated message beyond the amount of that portion of the charge which may or shall accrue to this Company out of the amount received from the sender for this, and the other companies, by whose lines such message may pass to reach its destination; and that this Company shall not be liable for mistakes in the transmission or delivery, or for non-delivery, or mis-delivery, of any repeated message beyond fifty times the extra sum received by this Company from the sender for repeating such message over its own lines.

This Company is hereby made the agent of the sender without liability to forward any message by the lines of any other company to reach its destination.

This Company shall not be responsible for messages until they are presented and accepted at one of its transmitting offices; if a message be sent to such office by one of the Company's messengers, the messenger acts for that purpose as the agent of the sender; if by telephone, the person receiving the message acts therein as the agent of the sender, and is authorized to assent to these conditions on behalf of the sender.

This Company shall not be liable in any case where the claim is not presented in writing within sixty days after the filing of the message.

This Company shall not be liable in any case for delays arising from interruptions to the working of its lines, nor for errors in cipher or obscure messages.

This is an UNREPEATED message and is transmitted and delivered by request of the sender under the conditions named above.

The above terms and conditions shall be binding upon the receiver as well as the sender of this message.

No employee of this Company is authorized to vary the foregoing.

CHARLES C. ADAMS, SECOND VICE-PREST.

CLARENCE H. MACKAY, PRESIDENT
EDWARD J. NALLY, VICE-PREST. AND GENERAL MANAGER

CHARLES P. BRUCH, THIRD VICE-PREST.

POSTAL TELEGRAPH - FASTEST SERVICE IN THE WORLD

NIGHT LETTER

THE WESTERN UNION TELEGRAPH COMPANY

25,000 OFFICES IN AMERICA

INCORPORATED

CABLE SERVICE TO ALL THE WORLD

This Company TRANSMITS and DELIVERS messages only on conditions limiting its liability, which have been assented to by the sender of the following Night Letter. Errors can be guarded against only by repeating a message back to the sending station for comparison, and the Company will not hold itself liable for errors or delays in transmission or delivery of Unrepeated Night Letters, sent at reduced rates, beyond a sum equal to ten times the amount paid for transmission; nor in any case beyond the sum of Fifty Dollars, at which, unless otherwise stated below, this message has been valued by the sender thereof, nor in any case where the claim is not presented in writing within sixty days after the message is filed with the Company for transmission.

This is an UNREPEATED NIGHT LETTER, and is delivered by request of the sender, under the conditions named above.

THEO. N. VAIL, PRESIDENT

BELVIDERE BROOKS, GENERAL MANAGER

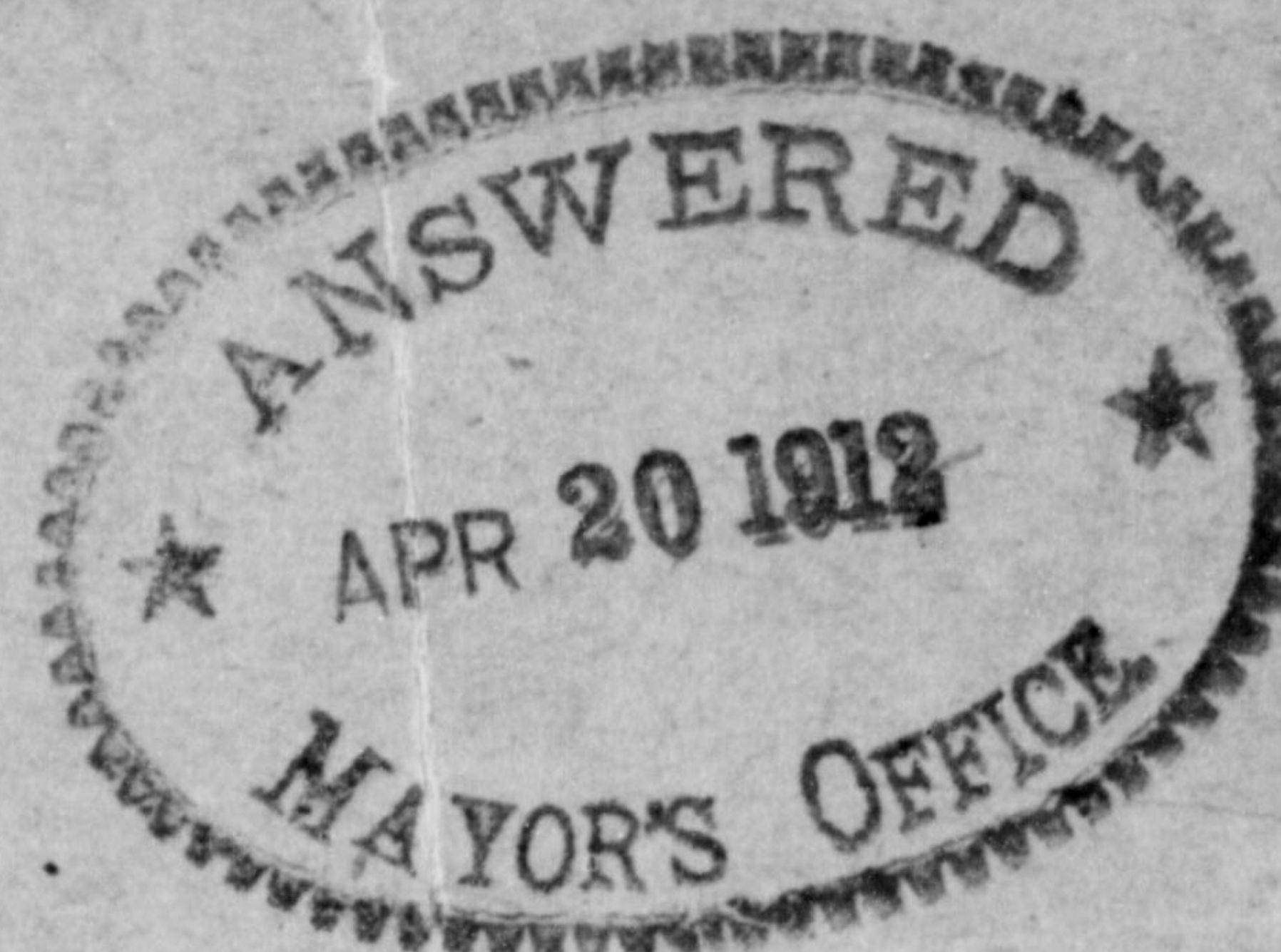
RECEIVED AT the WESTERN UNION BUILDING, 195 Broadway, N. Y. ALWAYS OPEN

dl11CH NN 38 N L

Lincoln Neb Apr 18 1912

Hon WM J Gahnor

Mayor Of NewYork



8517

I wish I were present in NewYork this afternoon to join with my fellow citizens in expressing our grief at the shocking catastrophe to the Titanic and our deep sympathy with the kinsfolk of those who have perished

Theo Roosevelt

230 AM

SEE OTHER SIDE FOR TELEGRAM

Domestic and Foreign Money Orders by Telegraph and Cable

THE WESTERN UNION TELEGRAPH COMPANY

INCORPORATED

THE LARGEST TELEGRAPHIC
SYSTEM IN THE WORLD.

OVER ONE MILLION MILES
OF WIRE IN THE UNITED STATES
AND CANADA.

It has over 25,000 Telegraph Offices,
including Branch Offices.

It has also Direct Connection by Tele-
graph or Telephone with many more remote
and smaller stations, making a total list
of 60,000 in the United States, Canada
and Mexico, and this number is rapidly
increasing.

SEVEN ATLANTIC CABLES

Connecting North America with all points
in Europe and beyond, including Two
Cables of the American Telegraph and
Cable Company, Four Cables of the Anglo-
American Telegraph Company, and One
Cable of the Direct United States Cable Co.

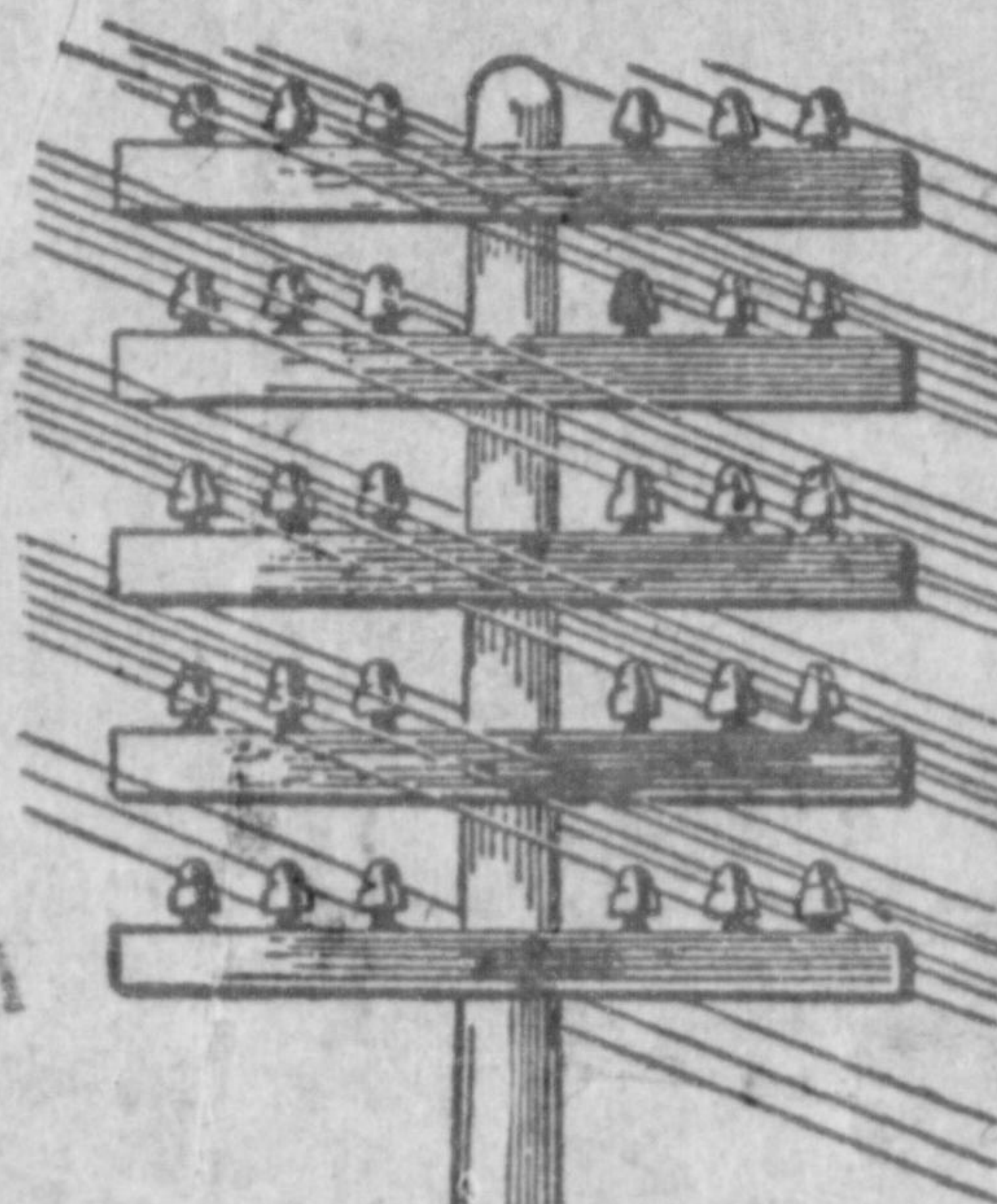
Direct Wires to Galveston, Texas, con-
necting at that place with the Cables of the
Mexican, the Central and South American
Telegraph Companies for all points in
Mexico and Central and South America.

Direct Wires and Cables to Havana,
Cuba, connecting at that place with the
Cuba Submarine and West India and Pan-
ama Telegraph Companies for all points
in the West Indies.

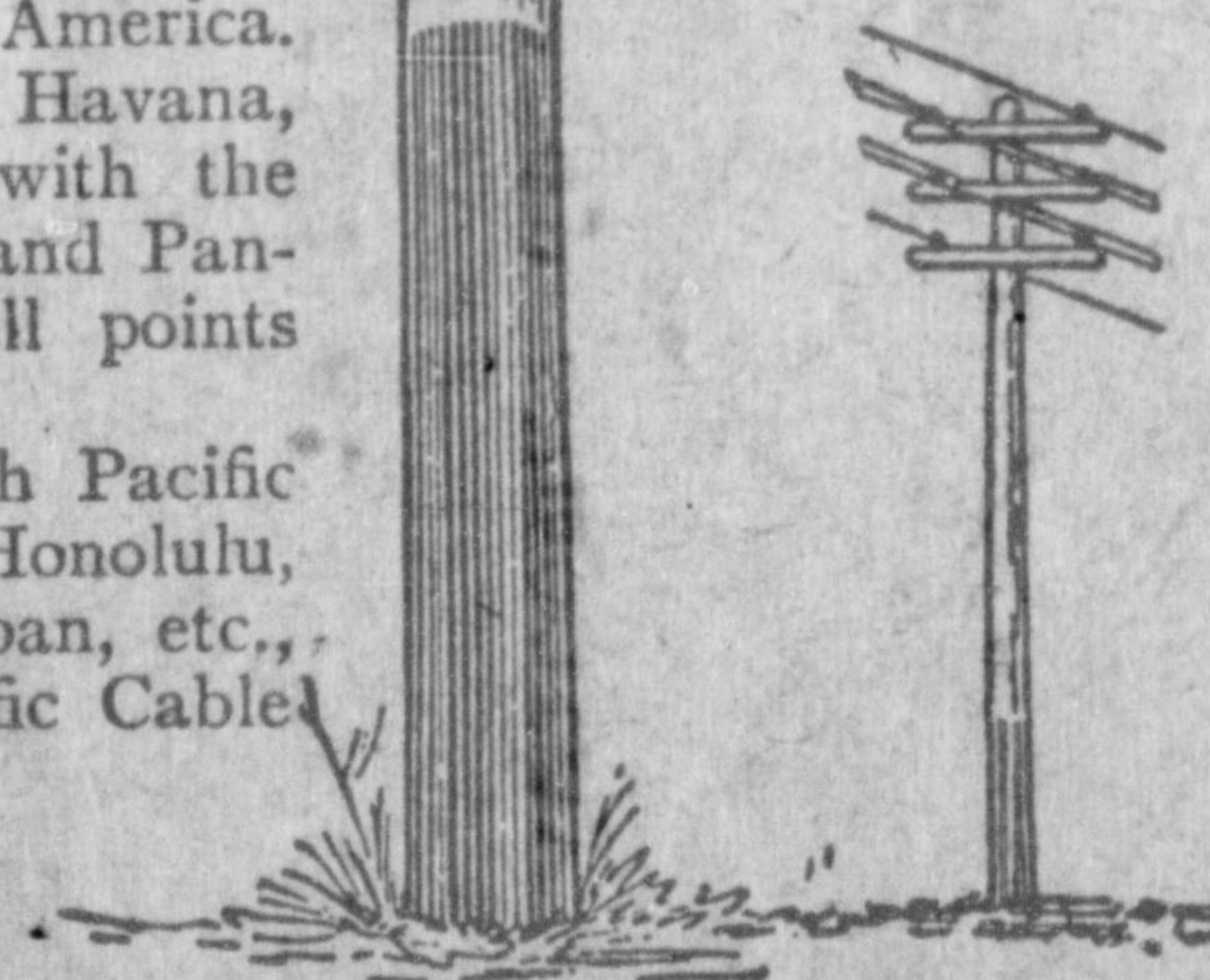
Connects at San Francisco with Pacific
Cables to the Sandwich Islands, Honolulu,
Guam, the Philippines, China, Japan, etc.,
and at Victoria, B. C., with Pacific Cable
to Australia and New Zealand.

Connects at Seattle, Wash.,
with U. S. Government Lines
and Cables to and in Alaska.

Exclusive connection with the Great
North-Western Telegraph Co. of Canada.



THE TWO TELEGRAPH POLES REPRESENT THE
RELATIVE SIZE IN NUMBER OF OFFICES OF
THE WESTERN UNION AS COMPARED WITH ALL
OTHER COMPETING COMPANIES COMBINED



WESTERN UNION
TELEGRAPH
COMPANY

ALL
COMPETING
COMPANIES

Domestic and Foreign Money Orders by Telegraph and Cable

SEE OTHER SIDE FOR TELEGRAM

April 20, 1912.k

Dear Mr. Roosevelt:

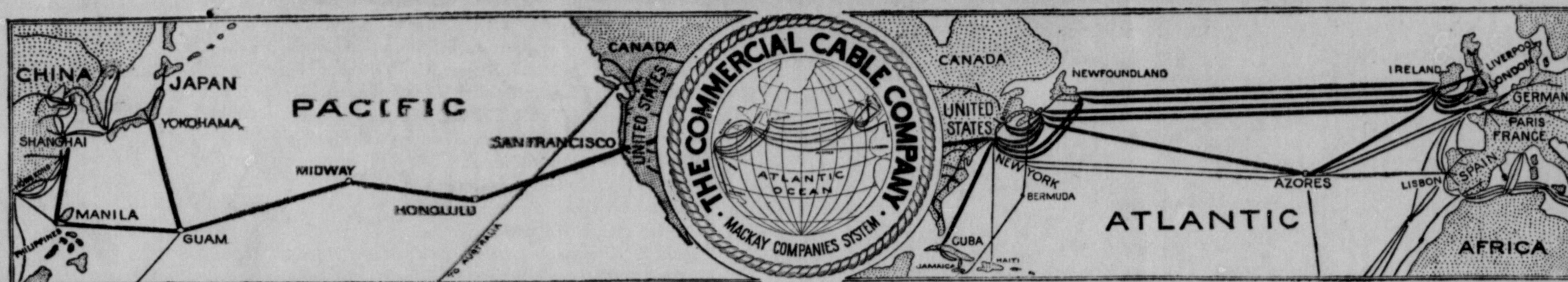
I thank you very much for your expression of sympathy for those who perished or suffered by the "Titanic" disaster. The fund for their relief and the relief of their dependents is growing rapidly.

Sincerely yours,

W. L. Mayer
Mayer.

Hon. Theodore Roosevelt,
Oyster Bay,
N. Y.

CABLEGRAM



253 BROADWAY
TEL. BARCLAY 6700

FS **"VIA COMMERCIAL"**

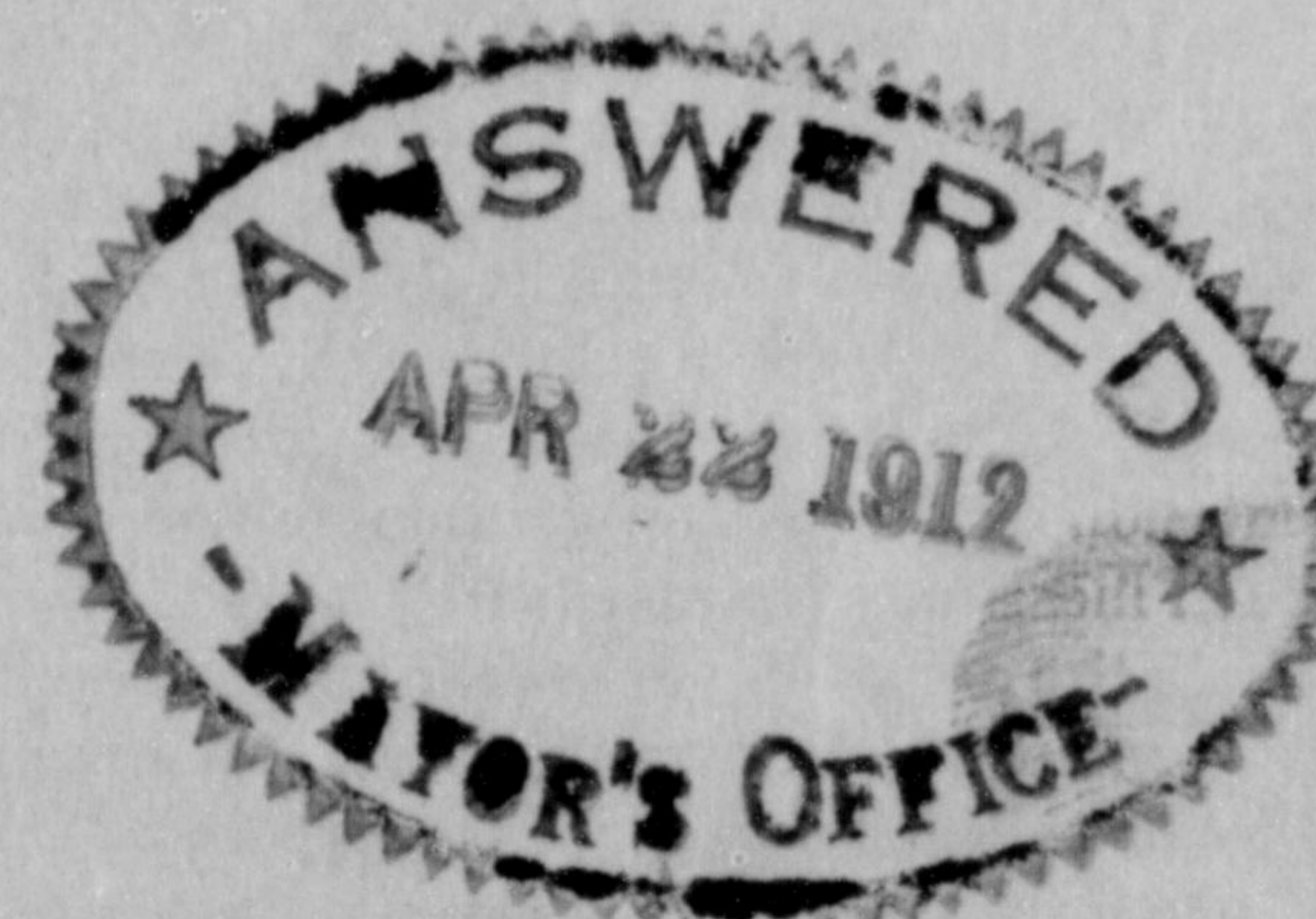
APR 20 1912

RECEIVED AT

M. SUBJECT TO TERMS AND CONDITIONS AT BACK HEREOF, WHICH ARE RATIFIED AND AGREED TO.

LR 2

PRETORIA 21



MAYOR NY.

MUNICIPAL COUNCIL PRETORIA GREATLY REGRET TITANIC
DISASTER AND DEEPLY SYMPATHISE WITH BEREAVED AMERICAN
CITIZENS PLEASE CONVEY PROPER QUARTER
MAYOR.

THE COMMERCIAL CABLE COMPANY.

AMERICAN OFFICES.

NEW YORK.	TELEPHONE.
Commercial Cable Building	Rector 380
Stock Exchange	
Cotton Exchange	
16 Beaver Street	Broad 427
Postal Telegraph Building	Barclay 6700
83 Gold Street, cor. Spruce	Beekman 4416
442 Broome Street	Spring 1108
944 Broadway	Gramercy 2291
"Herald" Building	Murray Hill 3025
BOSTON	
112 State Street	728
155 Federal Street	728
HALIFAX, N. S.	
201 Hollis Street	626

EUROPEAN OFFICES

LONDON (Principal Office), 23 Royal Exchange.
 LIVERPOOL, F 7 Exchange Buildings and Cotton Exchange.
 MANCHESTER, 18 Moulst Street, Cross Street (opposite Royal Exchange).
 BRADFORD, 8 Forster Square.
 NEWCASTLE-ON-TYNE, 29 Sandhill.
 BRISTOL, Carlton Chambers, Baldwin Street.
 GLASGOW, 28 Gordon Street.
 EDINBURGH, 18c George Street.
 DUNDEE, 37 Albert Square.
 LEITH, 5 Bernard Street.
 PARIS, 49 Avenue de l'Opera (New York Herald Office).
 HAVRE, 112 Boulevard de Strasbourg.
 HORTA, FAYAL, Azores Islands.

CABLEGRAMS FOR TRANSMISSION BY COMMERCIAL, COMMERCIAL PACIFIC, GERMAN ATLANTIC, HALIFAX & BERMUDAS, DIRECT WEST INDIA, NEWFOUNDLAND AND COMMERCIAL OF CUBA CABLES ARE ACCEPTED AT ALL POSTAL TELEGRAPH AND CANADIAN PACIFIC RAILWAY TELEGRAPH OFFICES.

TERMS AND CONDITIONS.

THE COMMERCIAL CABLE COMPANY may decline to forward any message, though it has been accepted for transmission, but in case of so doing, shall refund to the sender the amount paid for its transmission.

THIS COMPANY WILL NOT ASSUME ANY RESPONSIBILITY IN RESPECT TO ANY MESSAGE BEYOND THE TERMINUS OF ITS OWN LINES.

To guard against mistakes or delays, the sender of a message should WRITE IT LEGIBLY and order it REPEATED; that is, telegraphed back to the sending station for comparison. For such repeating an additional charge of one-quarter the regular rate will be made.

It is agreed between the sender of the message on the face hereof, and this Company, that said Company shall not be liable for mistakes or delays in transmission or delivery, or for non-delivery, or mis-delivery, of any unrepeatd message beyond the amount of that portion of the charge which may or shall accrue to this Company out of the amount received from the sender for this, and the other companies, by whose lines such message may pass to reach its destination; and that this Company shall not be liable for mistakes in the transmission or delivery, or for non-delivery, or mis-delivery, of any repeated message beyond fifty times the extra sum received by this company from the sender for repeating such message over its own lines.

This Company is hereby made the agent of the sender without liability to forward any message by the lines of any other company to reach its destination.

This Company shall not be responsible for messages until they are presented and accepted at one of its transmitting offices; if a message be sent to such office by one of the Company's messengers, the messenger acts for that purpose as the agent of the sender; if by telephone, the person receiving the message acts therein as the agent of the sender, and is authorized to assent to these conditions on behalf of the sender.

This company shall not be liable in any case where the claim is not presented in writing within sixty days after the filing of the message.

This company shall not be liable in any case for delays arising from interruptions to the working of its lines, nor for errors in cipher or obscure messages.

In any event this Company shall not be held liable for any loss or damage, or for delay or detention, or errors caused by storms or the action of the elements, or other acts of God, or by civil or military authority, or by insurrections, riots, rebellions, or dangers incident to the time of war, or by the unlawful acts of individuals.

This is an UNREPEATED message and is delivered by request of the sender under the conditions named above.

No employé of this Company is authorized to vary the foregoing.

CLARENCE H. MACKAY, PRESIDENT. GEO. G. WARD, VICE-PRES'T AND GEN'L MANAGER. ALBERT BECK, SECRETARY

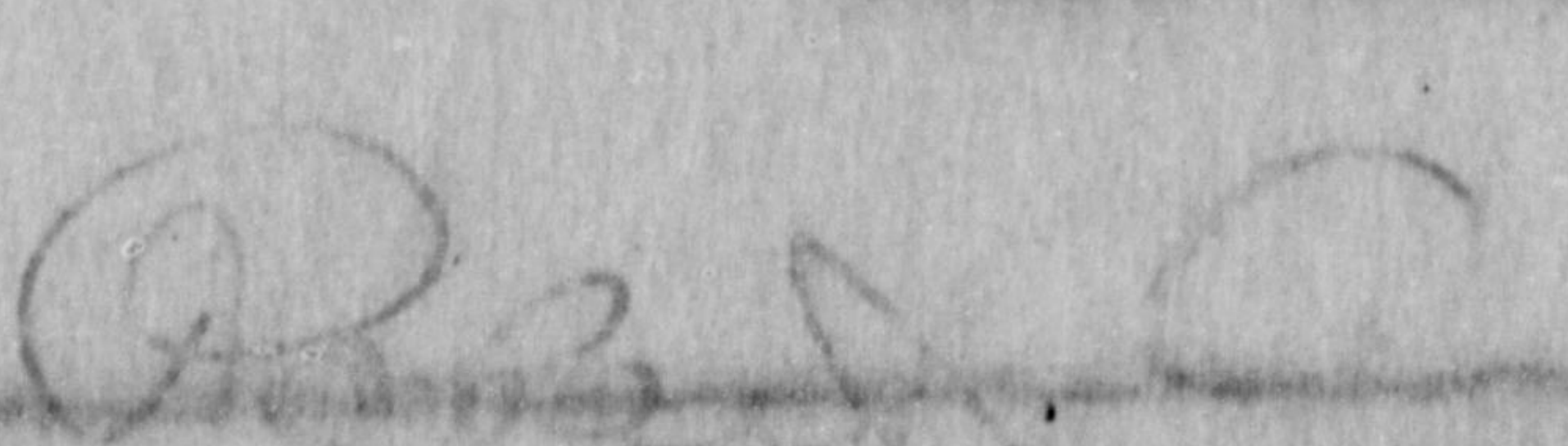
April 22, 1912.

S i r:

I am directed by the Mayor to acknowledge with thanks your very thoughtful and considerate message by cable, extending the sympathy of yourself and the Municipal Council of Pretoria to the unfortunate persons who were bereaved by the disaster to the steamship Titanic.

The Mayor directs me to express to you his deep appreciation of your kind message.

Yours truly,


Secretary.

To the Honorable
Mayor of Pretoria,
South Africa.